

# Excel Premium Components



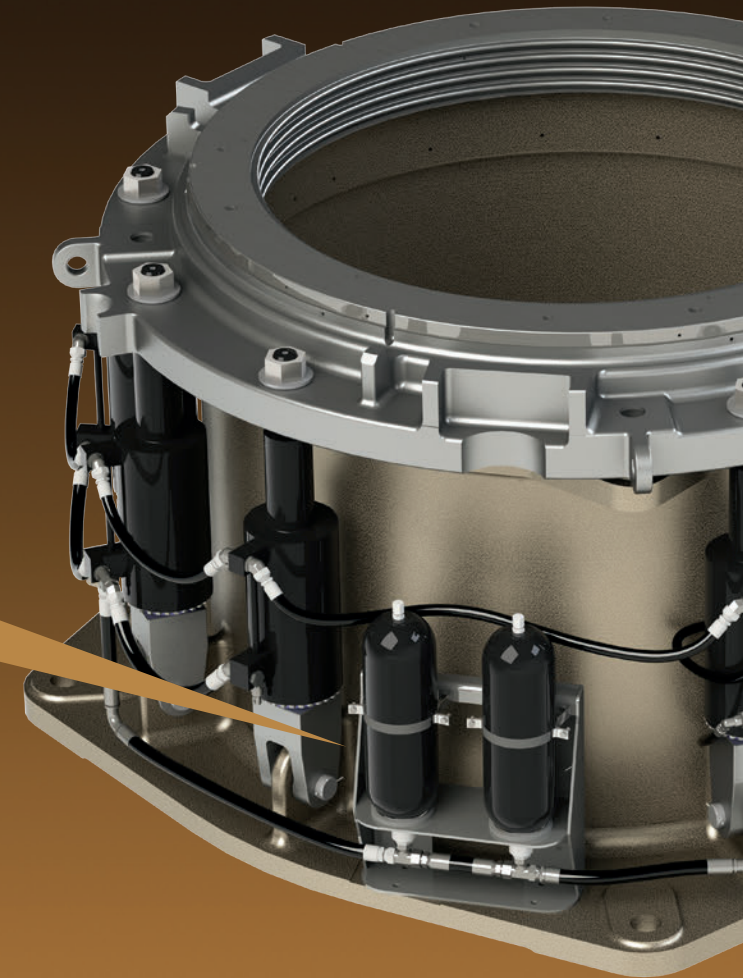
## Tramp Release System Upgrade for HP700™ & HP800™ Cone Crushers

### Greater Force, Less Pressure

- Outputs 1,116,500 lbs (506,436 kg) at 1600 psi vs. the conventional system's output of only 951,100 lbs (431,412 kg) at 2600 psi.
- Operates at a lower circuit pressure, reducing cycling of the HPU pump and motor and increasing wear life.
- Provides superior protection from mechanical overload that can result during major tramp events.

### Two Sets of Two Remote-Mounted Accumulators

- Pre-charge and maintain only four 5-gallon (18.9 liter) accumulators opposed to nine 2.5-gallon (9.5 liter) accumulators in the conventional design.
- Flow ports are mounted downward, which results in fewer bladder failures. HP® flow ports are mounted upward, which is not the recommended method for bladder-type accumulators.



# Excel Premium Components

Tramp Release System Upgrade for  
HP700™ & HP800™ Cone Crushers

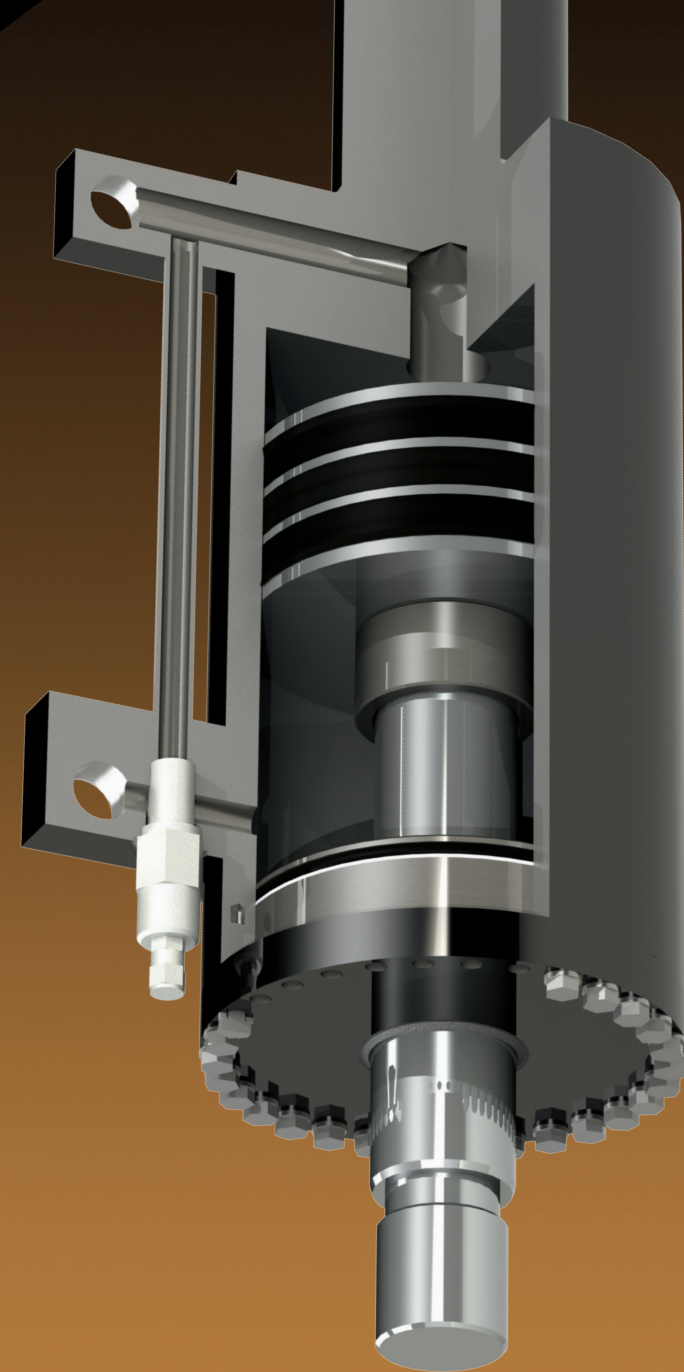
## Greater Strength, Increased Protection

### Enhanced Cylinders Provide Greater Force

- Excel's cylinder assemblies feature 10-inch (254 mm) diameter pistons opposed to 8-inch (203.2 mm) diameter conventional pistons.
- Component safety and crusher productivity is increased by requiring less hydraulic circuit pressure without sacrificing power.
- Integral relief valves provide additional crusher protection during major tramp iron events, which can significantly reduce stress on the crusher's major components.
- Relief valves act as a backup for the four 5-gallon (18.9 liter) port-down accumulators.

### Extended Component Wear Life

- Assemblies are mounted with the piston rod and head facing downward.
- Downward mounting position keeps the seal areas free from dust and errant fine-particle buildup.
- Wear rings and seals experience reduced lateral loading for extended wear life.



1 Excel Way | P.O. Box 400  
Pekin, Illinois | 61555-0400 | USA  
Fax +1.309.347.1931 | sales@ExcelFoundry.com  
+1.309.347.6155 | Toll Free 800.523.9129  
**ExcelFoundry.com**



All brand names, model names or marks are owned by their respective manufacturers. Excel Foundry & Machine has no affiliation with the original equipment manufacturer. These terms are used for identification purposes only and are not intended to indicate affiliation with or approval by the OEM. All parts are manufactured by, for and warranted by Excel Foundry & Machine and are not manufactured by, purchased from or warranted by the original equipment manufacturer.

© Copyright 2016 FLSmidth A/S. All rights reserved.