

Automation and Feeding

Magnus Evertsson
Sandvik Rock Processing



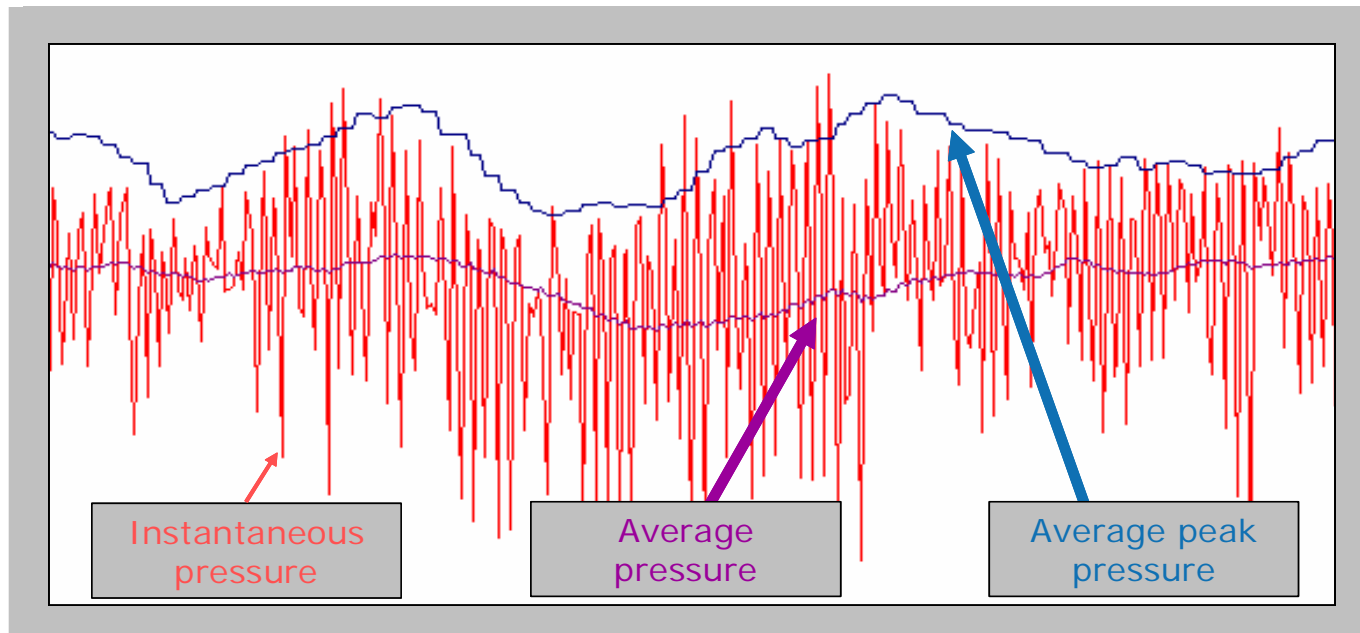
Crusher Control Strategy

New control algorithm

- Optimizes crusher performance
- Protects the crusher and enhances fatigue life
- Controls maximum stresses

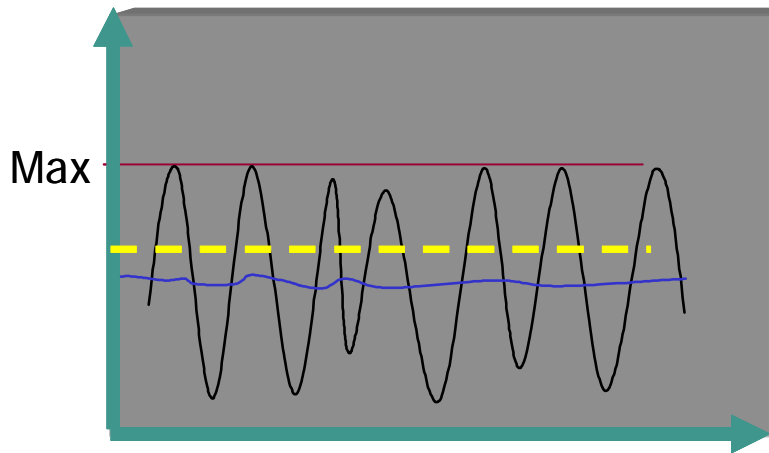
New control algorithm

Control average of peak pressure!

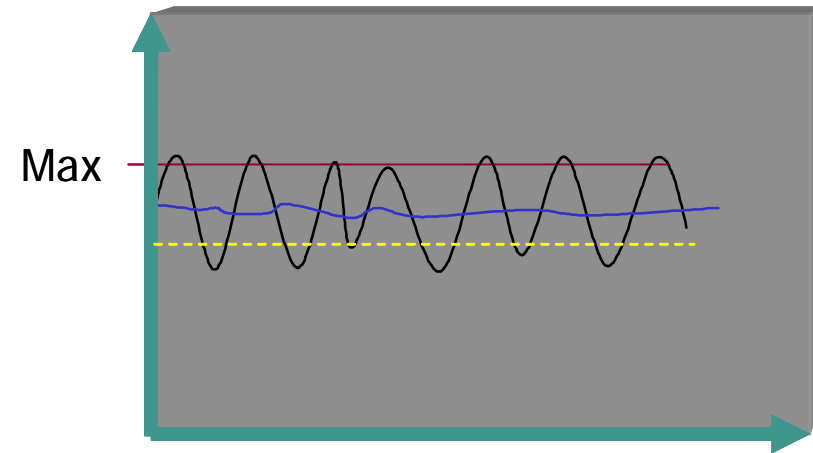


New control algorithm

A



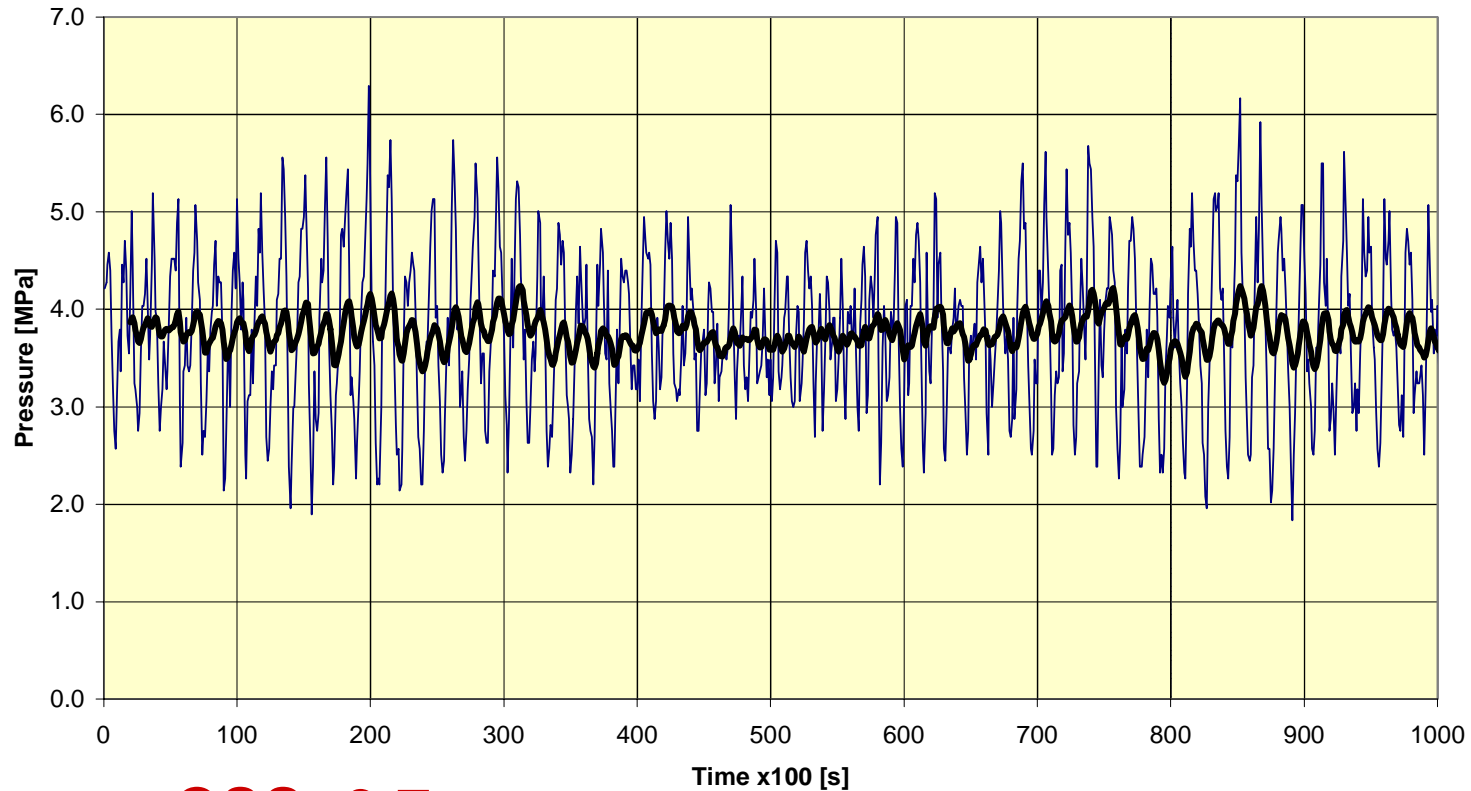
B



New control algorithm

- Unstable crushing conditions
- High amplitude, low average pressure

Feed +16-22mm, CSS=6.7mm

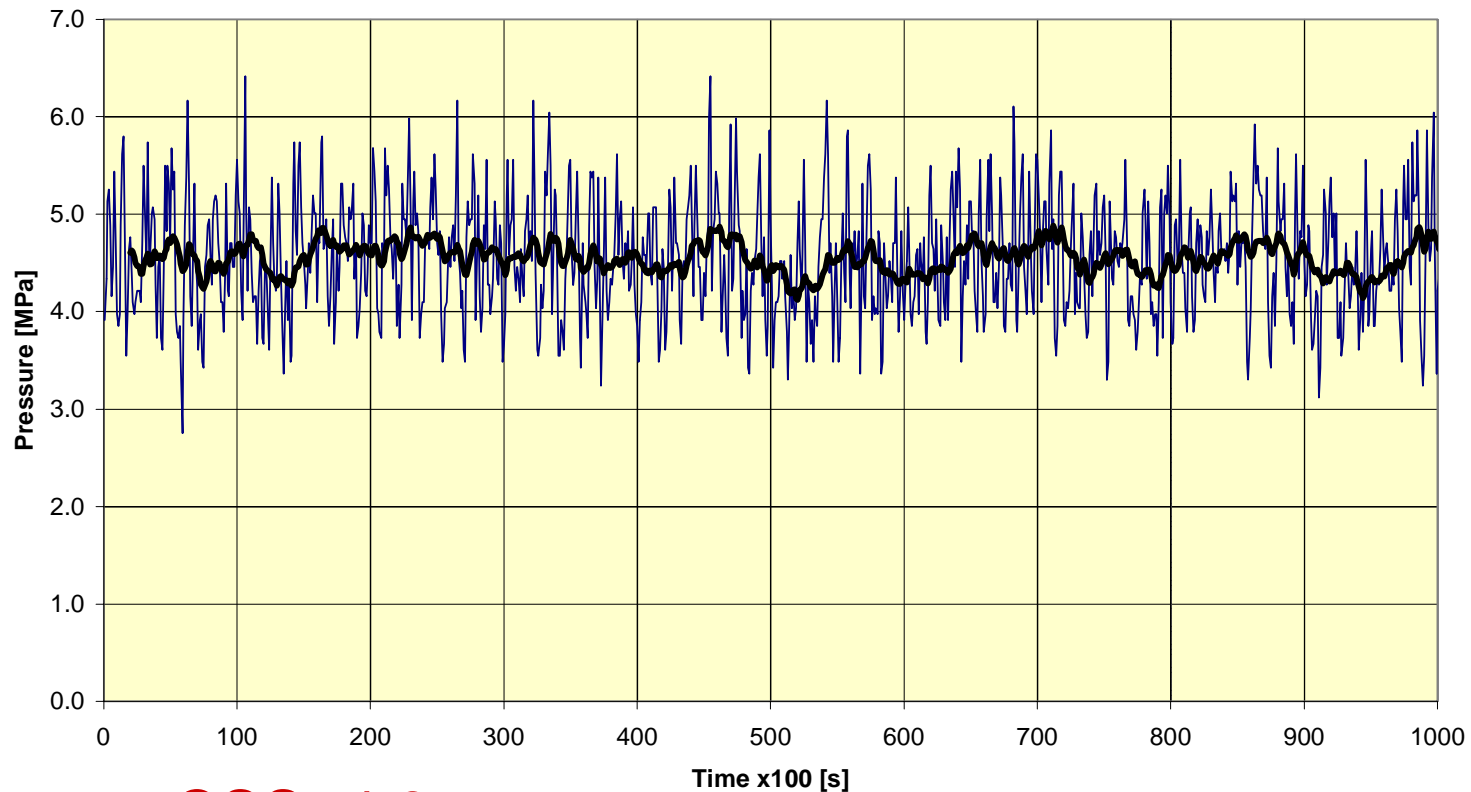


CSS=6.7mm

New control algorithm

- Good crushing conditions
- Low amplitude, high average pressure

Feed +16-22mm, CSS=4.3mm



CSS=4.3mm

Feeding conditions

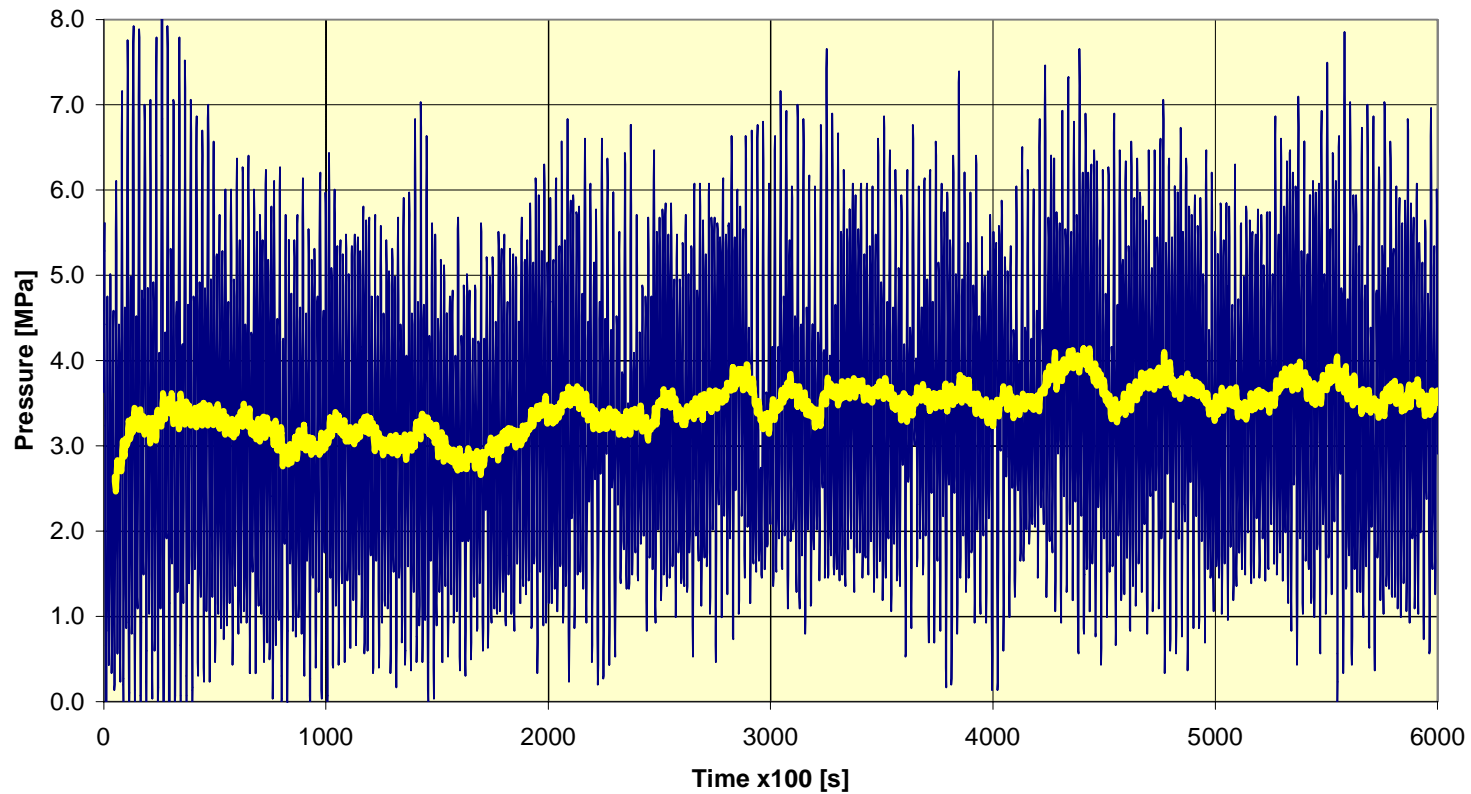
Stable feeding conditions
is the basis for high crusher
performance

Non-Choked Feed



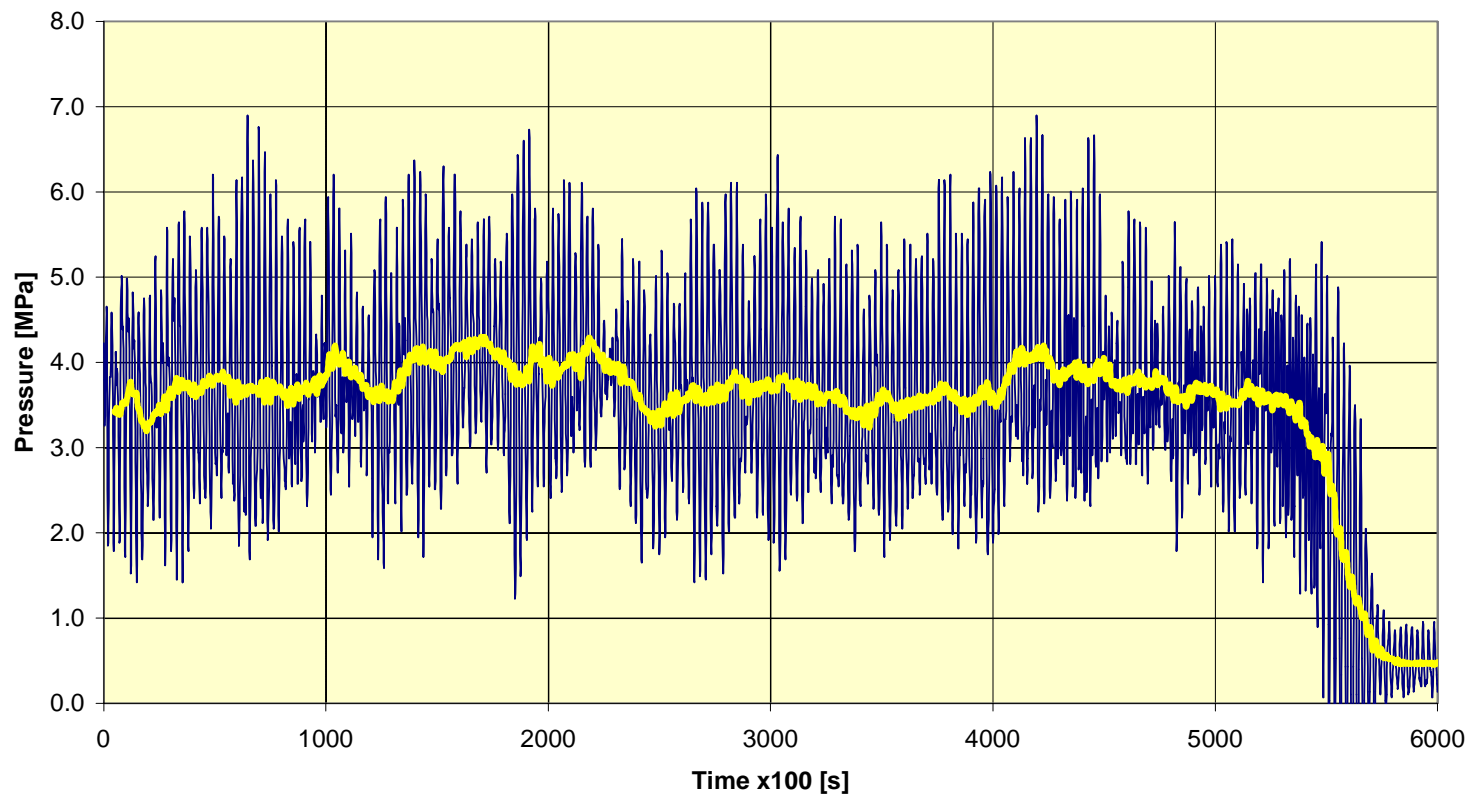
Feeding conditions

Non-choked feed
- High pressure amplitudes



Feeding conditions

Choked feed
- Low pressure amplitudes

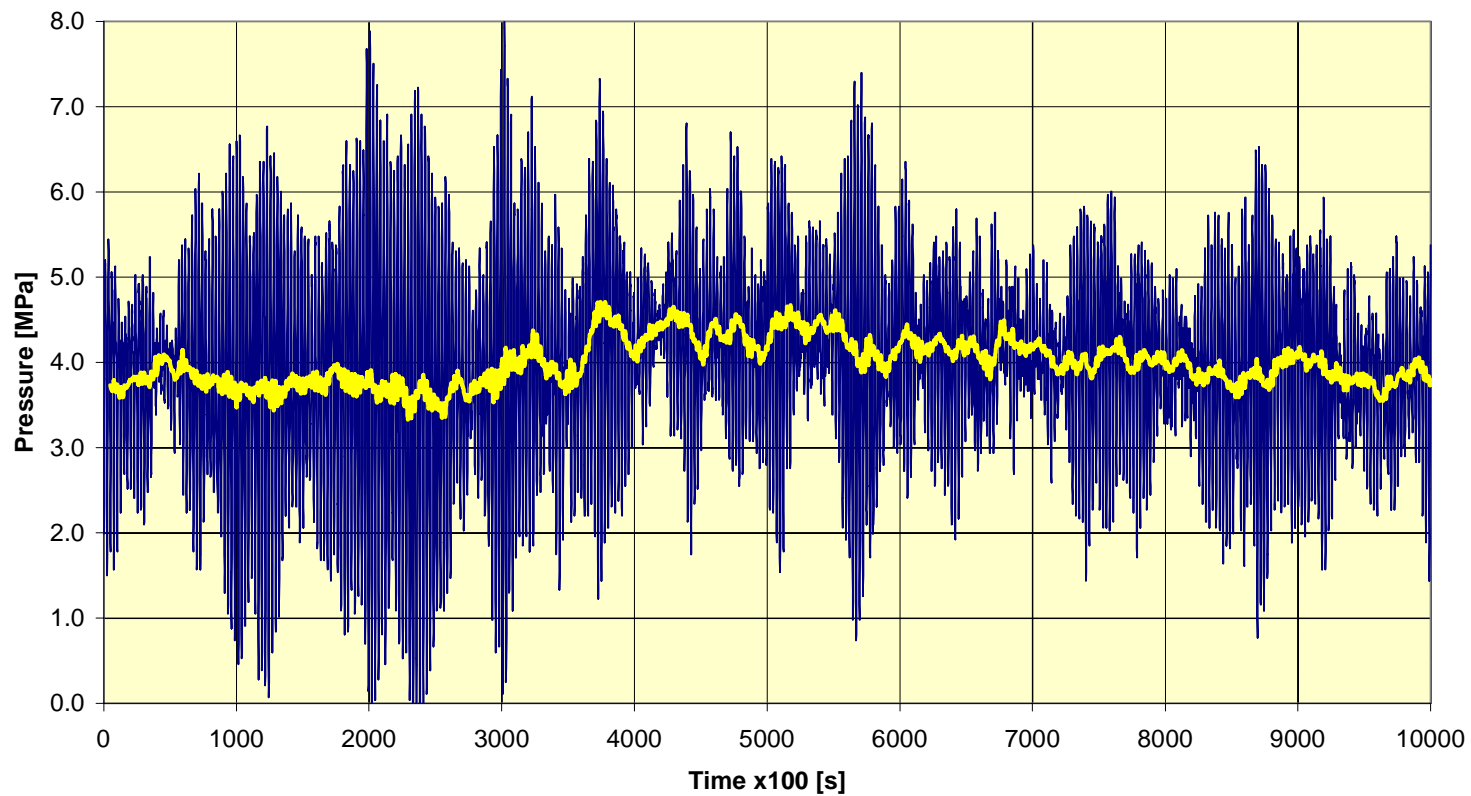


Segregated feed



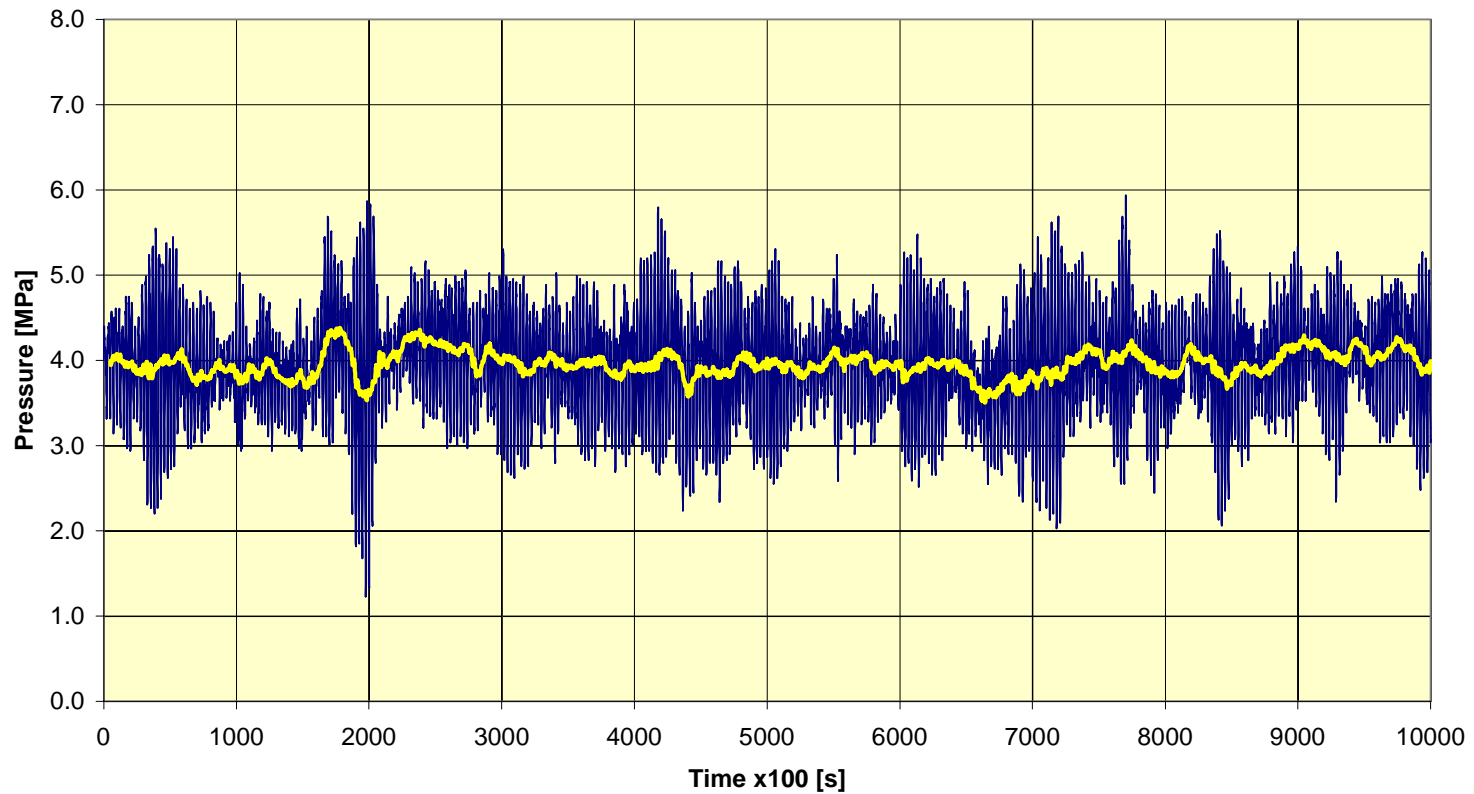
Feeding conditions

Misaligned/segregated feed
- High pressure amplitudes



Feeding conditions

Aligned feed
- Low pressure amplitudes



Splitter



Rotary Distributor for Crusher

